

51'14

1'08

16'10

8'10

16'10

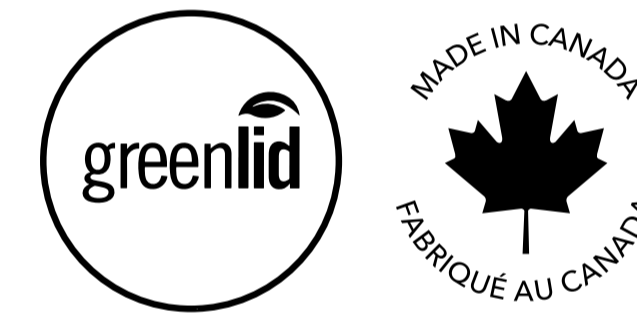
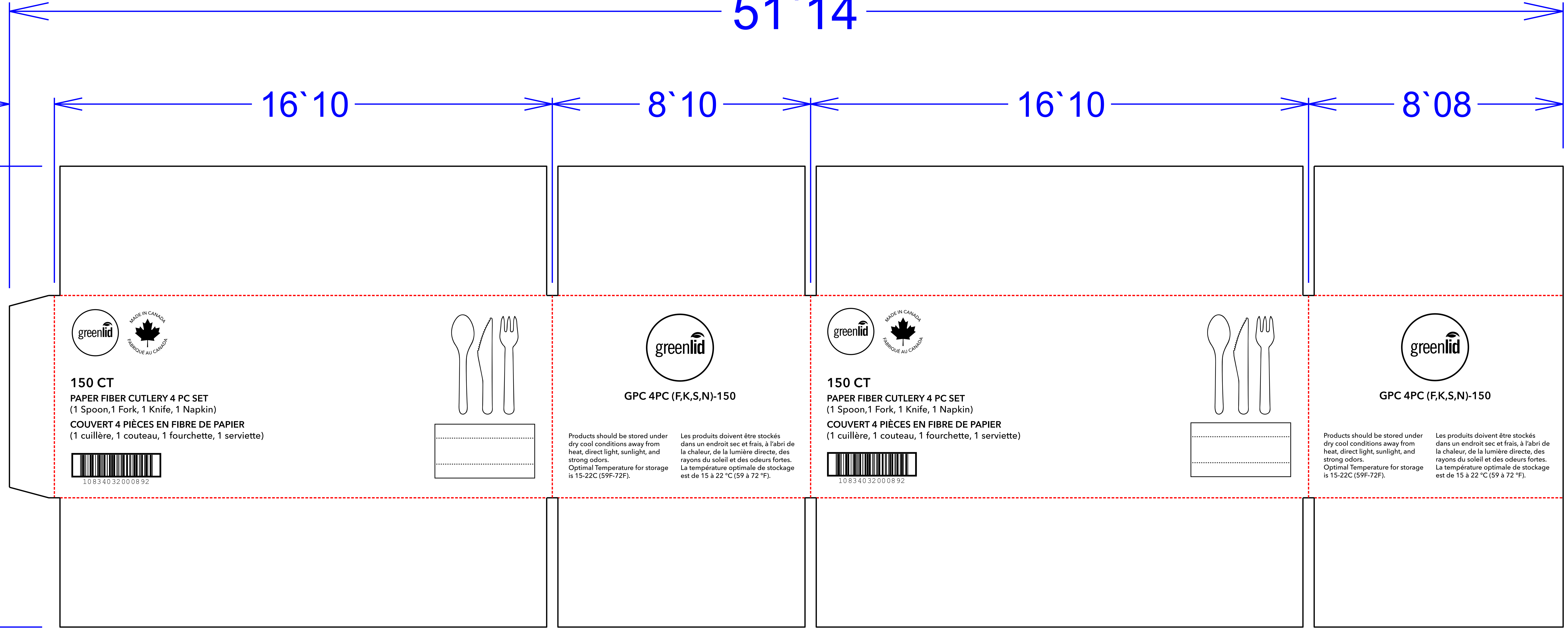
8'08

4'05

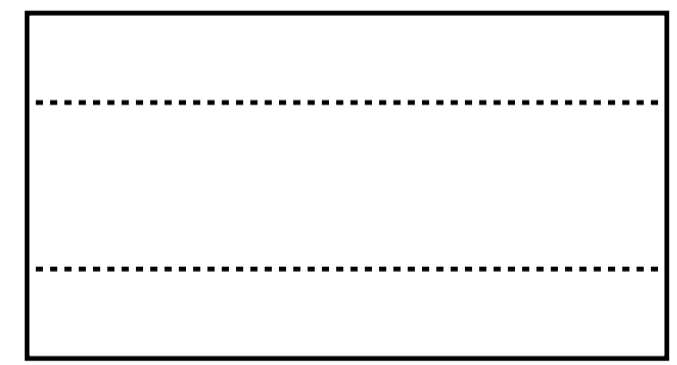
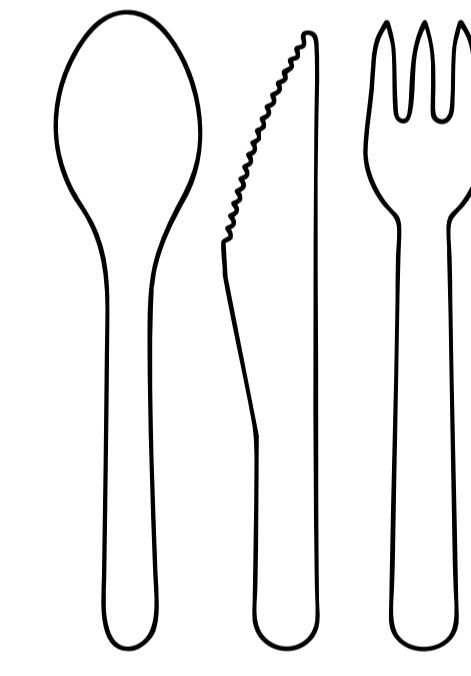
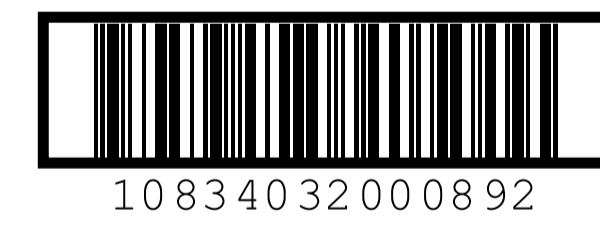
6'12

4'05

15'06

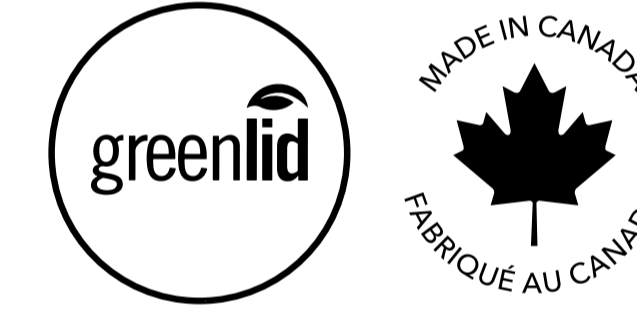


150 CT
PAPER FIBER CUTLERY 4 PC SET
 (1 Spoon, 1 Fork, 1 Knife, 1 Napkin)
COUVERT 4 PIÈCES EN FIBRE DE PAPIER
 (1 cuillère, 1 couteau, 1 fourchette, 1 serviette)

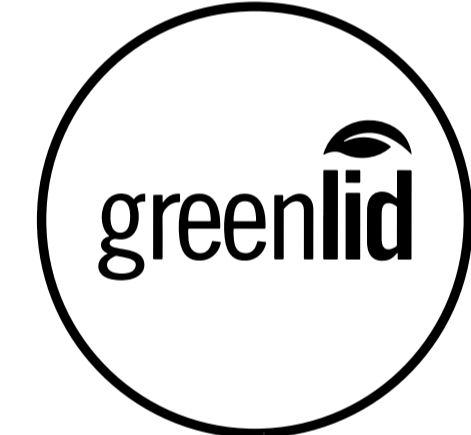
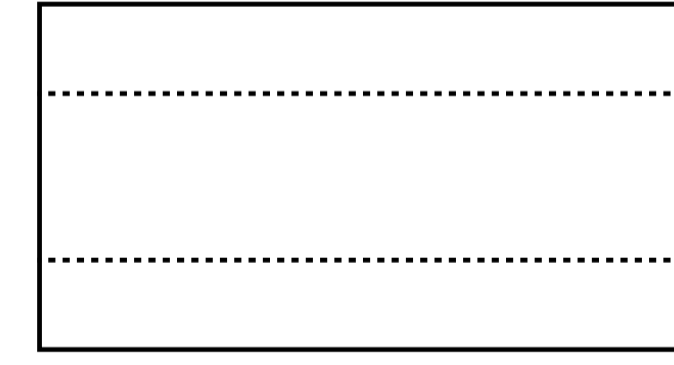
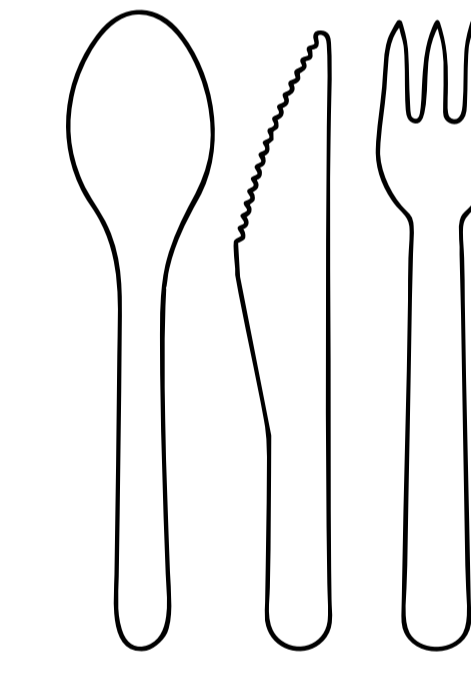
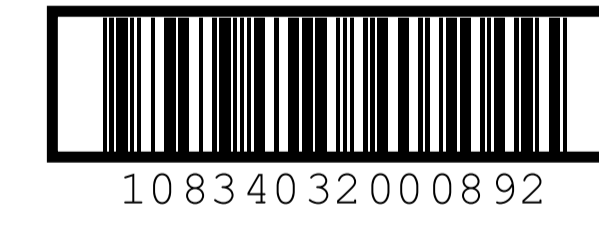


GPC 4PC (F,K,S,N)-150

Products should be stored under dry cool conditions away from heat, direct light, sunlight, and strong odors.
 Optimal Temperature for storage is 15-22C (59F-72F).
 Les produits doivent être stockés dans un endroit sec et frais, à l'abri de la chaleur, de la lumière directe, des rayons du soleil et des odeurs fortes.
 La température optimale de stockage est de 15 à 22 °C (59 à 72 °F).



150 CT
PAPER FIBER CUTLERY 4 PC SET
 (1 Spoon, 1 Fork, 1 Knife, 1 Napkin)
COUVERT 4 PIÈCES EN FIBRE DE PAPIER
 (1 cuillère, 1 couteau, 1 fourchette, 1 serviette)



GPC 4PC (F,K,S,N)-150

Products should be stored under dry cool conditions away from heat, direct light, sunlight, and strong odors.
 Optimal Temperature for storage is 15-22C (59F-72F).
 Les produits doivent être stockés dans un endroit sec et frais, à l'abri de la chaleur, de la lumière directe, des rayons du soleil et des odeurs fortes.
 La température optimale de stockage est de 15 à 22 °C (59 à 72 °F).